



A DIVISION OF
**LEE &
ASSOCIATES**

1651 16TH STREET SANTA MONICA



SANTA MONICA OFFICE FOR LEASE - 21,500 SF

FEATURES

- Full Kitchen
- Large Outdoor Terrace
- Former SMMUSD District Office
- 32 Offices, 3-4 Conference Rooms
- Adjacent to Santa Monica Memorial Park
- Close to I-10 Freeway and the Expo Line

CONTACT

Tommy Isola
Principal
310.899.2709
tisola@leewestla.com
AGT DRE 01974024

Aleks Trifunovic, SIOR
President
310.899.2721
atrifunovic@leewestla.com
BKR DRE 01363109



PREMISES

± 21,500 SF

RENT

\$2.50/SF, MG

TERM

3 Years

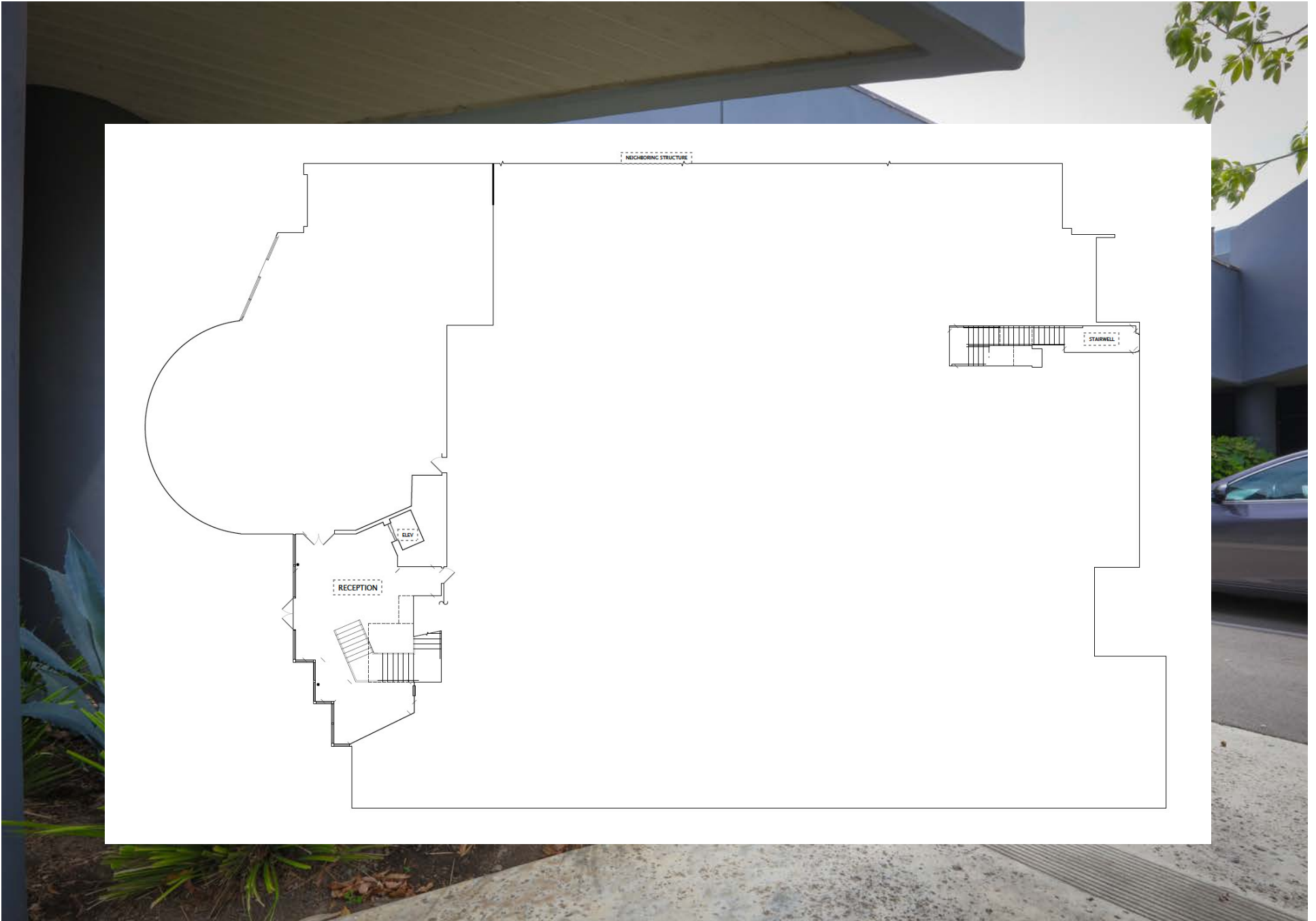
OCCUPANCY

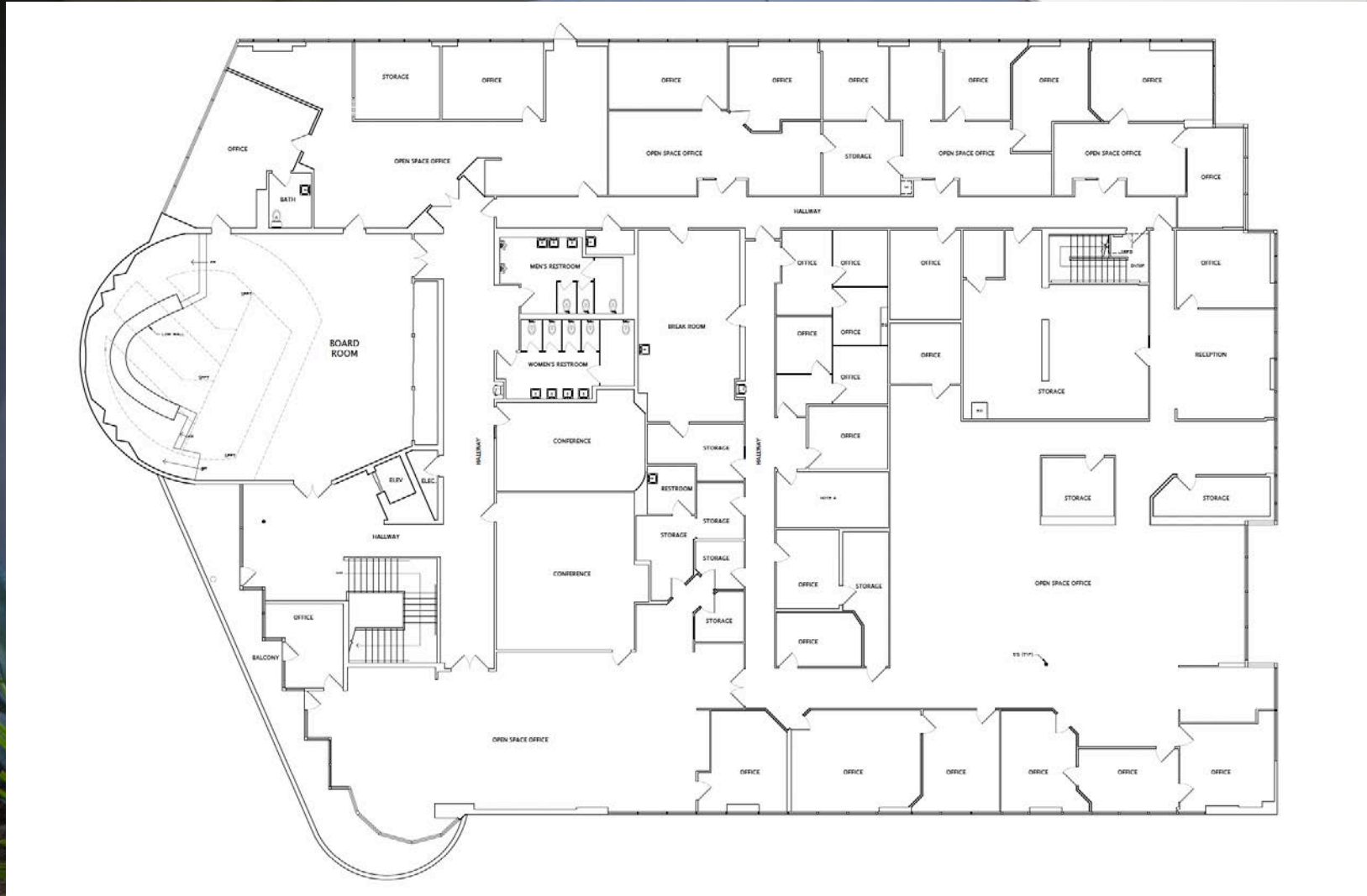
Immediate

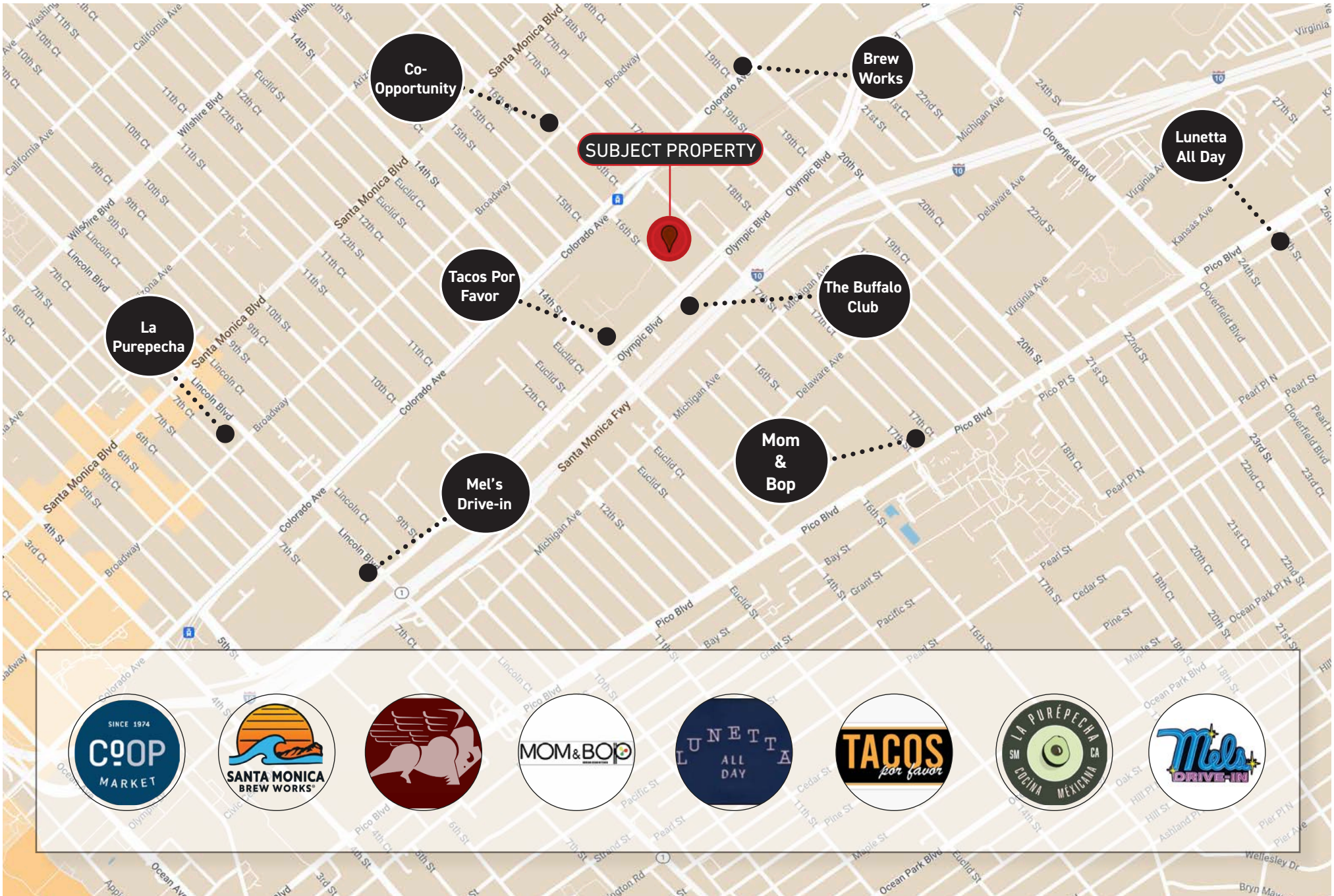
PARKING

3:1,000
(Reserved)

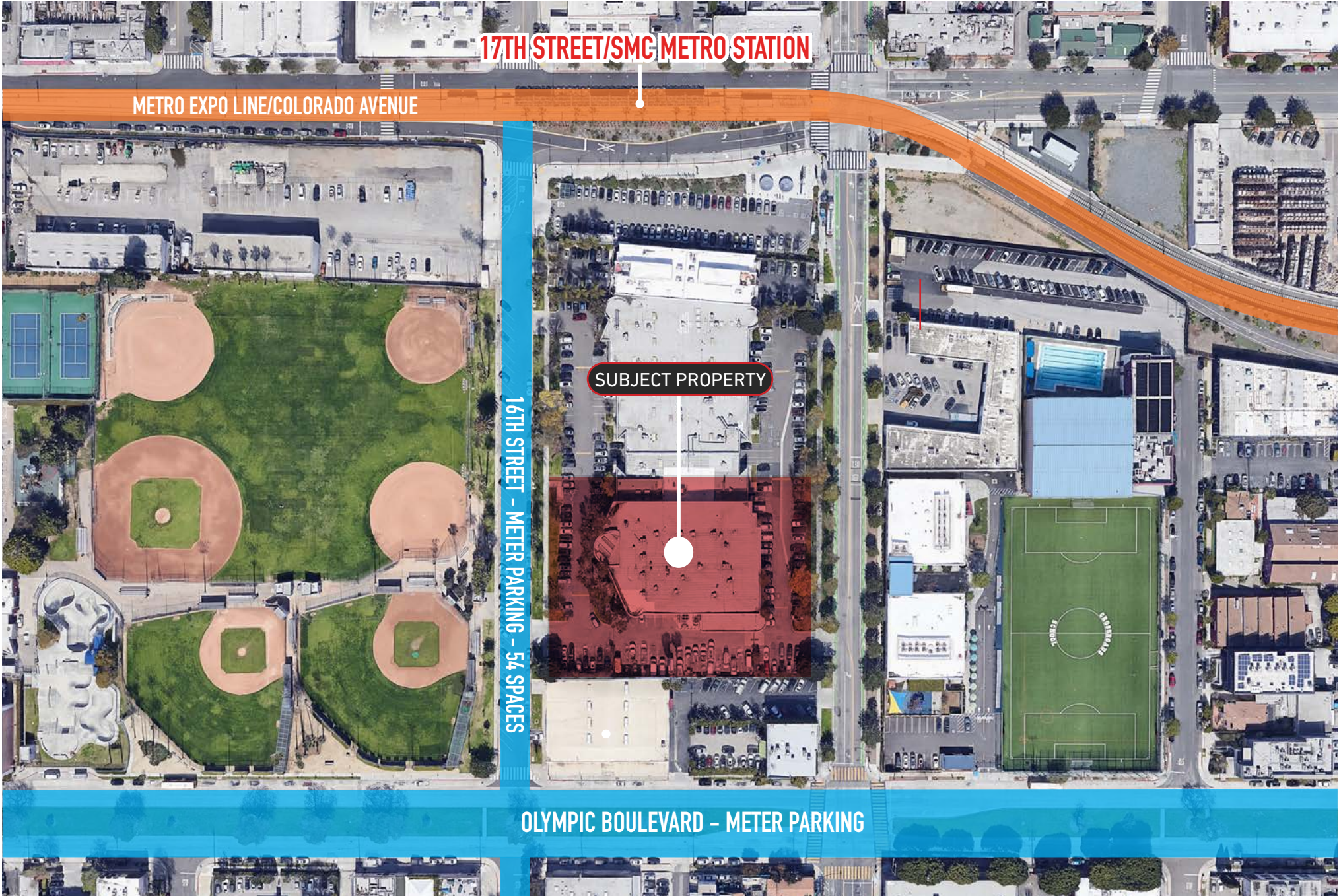














A DIVISION OF



Lee & Associates Los Angeles West, Inc.
1508 17th Street, Santa Monica, CA 90404
www.leewestla.com | DRE 01222000



Tommy Isola
Principal
310.899.2709
tisola@leewestla.com
AGT DRE 01974024

Aleks Trifunovic, SIOR
President
310.899.2721
atrifunovic@leewestla.com
BKR DRE 01363109