

LANDMARK SQUARE SUBLEASE

111 W OCEAN BOULEVARD, SUITE 1000
DOWNTOWN LONG BEACH

PLUG & PLAY OFFICE SPACE

SHORT TERM SUBLEASE - READY NOW

NEWLY BUILT OUT

9,606 SQUARE FEET (DIVISIBLE TO 5,817 SF)

PRIME LOCATION + OCEAN VIEW S

DIRECT ELEVATOR ID

NEWMARK

NMRK.COM

FOR MORE INFORMATION, PLEASE CONTACT:

MAI HU

Associate Director
t 213-596-2204
mai.hu@nmrk.com
CA RE Lic. #02027303

DAVID KLUTH

Executive Managing Director
t 213-596-2048
david.kluth@nmrk.com
CA RE Lic. #01051194

PROPERTY DESCRIPTION

9,606 SQUARE FEET (DIVISIBLE TO 5,817 SF)
TERM THROUGH MAY 31, 2025
ASKING RATE: NEGOTIABLE

EXPOSED HIGH CEILINGS, POLISHED CONCRETE FLOORS, UPGRADED FIXTURES

WELL BALANCED LAYOUT WITH OPEN SPACE, BREAKOUT AREAS, CONFERENCE ROOMS & PERIMETER OFFICES WITH FLOOR TO CEILING GLASS

STUNNING VIEWS OF THE PACIFIC OCEAN, QUEEN MARY, AND PORT OF LONG BEACH

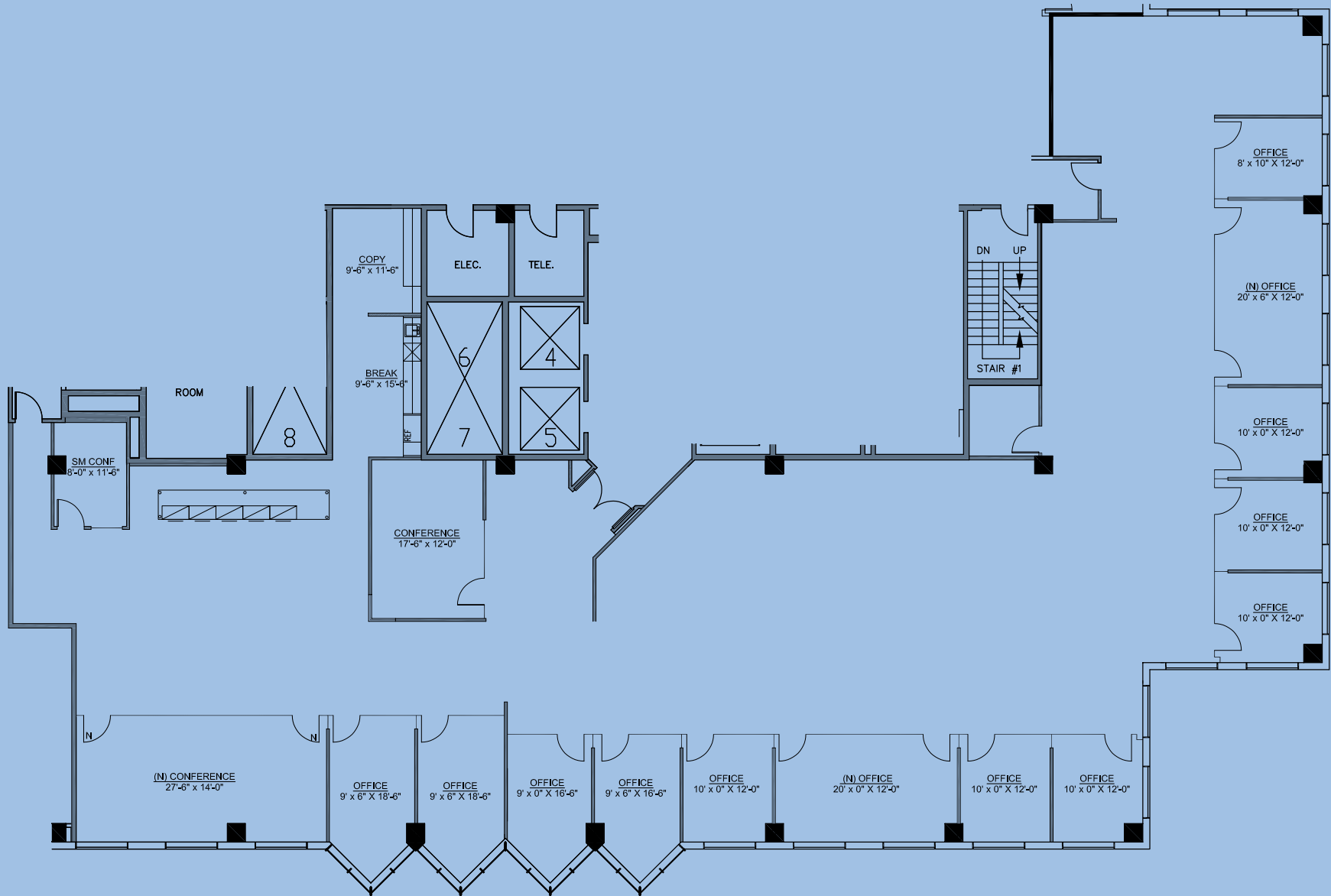
FURNITURE, NEGOTIABLE

PRIME LOCATION - LOCATED ON RESTAURANT ROW IN DOWNTOWN LONG BEACH. WALKING DISTANCE TO SHORELINE VILLAGE, PIKE OUTLETS, LONG BEACH CONVENTION CENTER

CLOSE TO 710 AND 405 FREEWAYS.
EASY ACCESS TO PUBLIC TRANSPORTATION - METRO STATION NEXT DOOR



FLOOR PLAN



Source: Kamus + Keller

LANDMARK SQUARE SUBLEASE

111 W OCEAN BOULEVARD, SUITE 1000
DOWNTOWN LONG BEACH

PLUG & PLAY OFFICE SPACE

FOR MORE INFORMATION, PLEASE CONTACT:

MAI HU

Associate Director
t 213-596-2204
mai.hu@nmrk.com
CA RE Lic. #02027303

DAVID KLUTH

Executive Managing Director
t 213-596-2048
david.kluth@nmrk.com
CA RE Lic. #01051194

NEWMARK

NMRK.COM

Corporate License #01355491

The information contained herein has been obtained from sources deemed reliable but has not been verified and no guarantee, warranty or representation, either express or implied, is made with respect to such information. Terms of sale or lease and availability are subject to change or withdrawal without notice.