

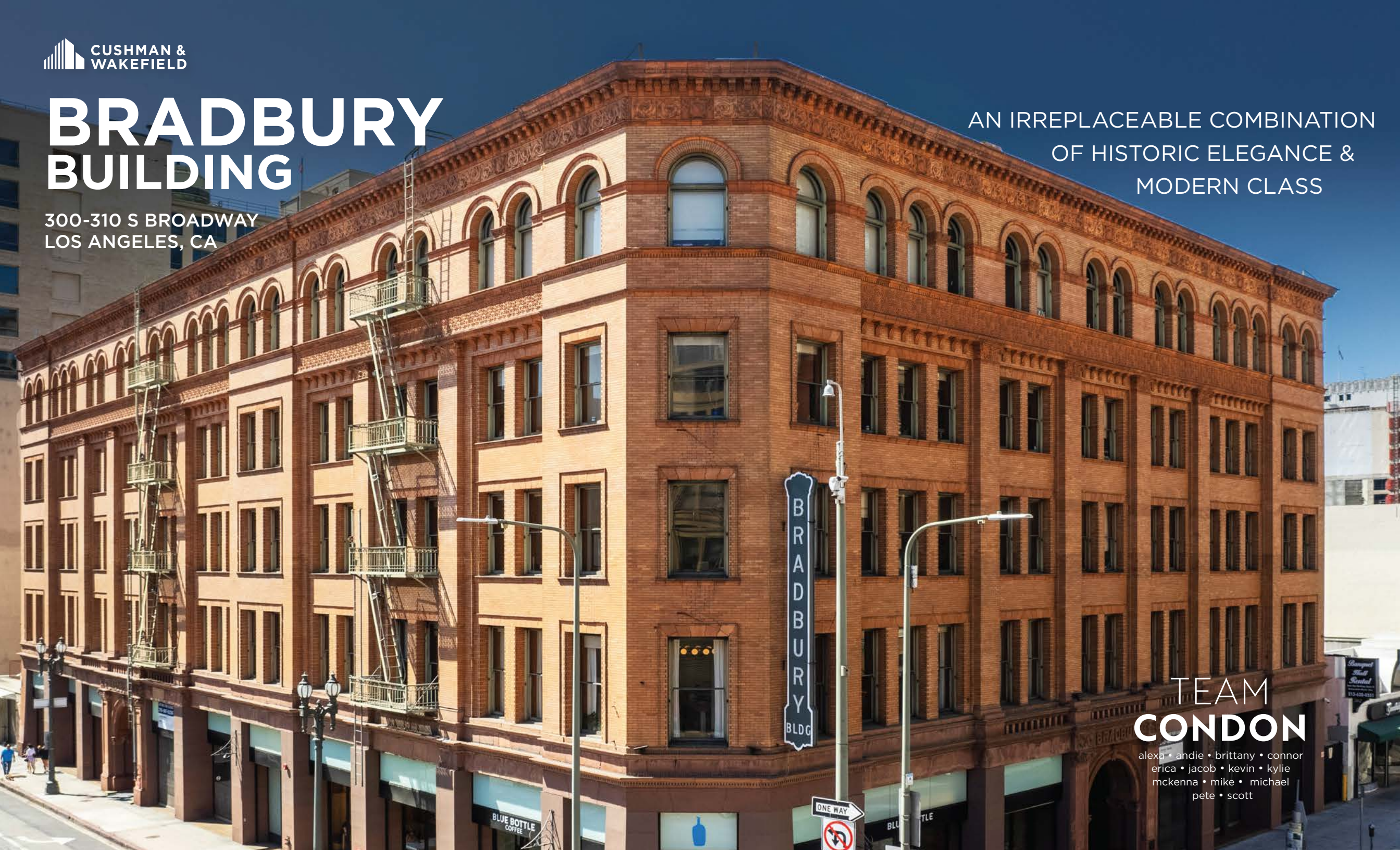
# BRADBURY BUILDING

300-310 S BROADWAY  
LOS ANGELES, CA

AN IRREPLACEABLE COMBINATION  
OF HISTORIC ELEGANCE &  
MODERN CLASS

TEAM  
**CONDON**

alexa • andie • brittany • connor  
erica • jacob • kevin • kylie  
mckenna • mike • michael  
pete • scott





## BUILDING HISTORY

The Bradbury, an antique architectural treasure of Los Angeles, was built in 1893 by mining millionaire Lewis Bradbury. The architect, George Wyman, was inspired by a 1880s science fiction novel on a utopian civilization in the year 2000. Costing an enormous \$500,000 to construct (\$325,000 over the original budget), Lewis Bradbury successfully accomplished his goal of creating a building that would perpetuate his name.





# HISTORIC NAMESAKE

Commissioned by its namesake back in 1893, The Bradbury Building has maintained significance over the years for its stunning cathedral-like interiors and current pop culture recognition through glitzy Hollywood film sets, and celebrity music videos. Fittingly, The Bradbury's history through the career narrative of its architect, George H. Wyman, can dually serve as a heartening tale of success for aspiring architects, artists, and dreamers alike.

When Lewis Bradbury made his fortune through gold-mining and real estate, he was originally inspired to hire prominent architect at the time, Sumner P. Hunt, to spearhead designs for an outstanding Bradbury building. Underwhelmed by Hunt's initial designs, Bradbury by way of fate or opportunity met and offered the young and inexperienced Wyman, working as a draftsman in Hunt's office, the chance to design the high-profile building in-place of his boss. Interestingly spiritualism was fashionable at the time, and Wyman approached the decision of whether to steal the opportunity from his boss through the occult practice of consulting his dead brother through a planchette, a device that functioned like an Ouija board with a pencil attached, that penned out the words "take Bradbury... you will be... successful."

Exactly as foretold by the spirits, Wyman's design for The Bradbury Building was a success, which led him to formalize his training through architecture school and immortalize the story of how an unknown unassuming artist can attain long-lasting recognition for his works.

# BUILDING HIGHLIGHTS

- The oldest commercial office building in downtown Los Angeles
- Across the street from the world-renowned Grand Central Market, offering a vast array of eateries
- Abundant month-to-month public parking with 10 structures and lots all within a two-block radius
- Top-of-the-line ownership, attentive on-site property management, and 24/7 security



Grand Central Market





## BUILDING FEATURES

- Five stories of impeccable office suites immersed within ornate cast iron, polished wood, rich marble, and glazed brick, and crowned with an extraordinary skylight atrium illuminating the entire building with natural light
- Beautiful creative spec suites available consisting of modern glass offices and conference rooms, hardwood flooring, and high-end kitchen finishes along with historic 125-year-old red brick walls, operable windows, and exposed wood ceilings.
- Balconies surrounding the court that provide access to the suites
- Two distinct open cage elevators in free-standing grillwork shafts
- Symmetric marble staircases on each end of the building

# AVAILABLE NOW

**SUITE A5**

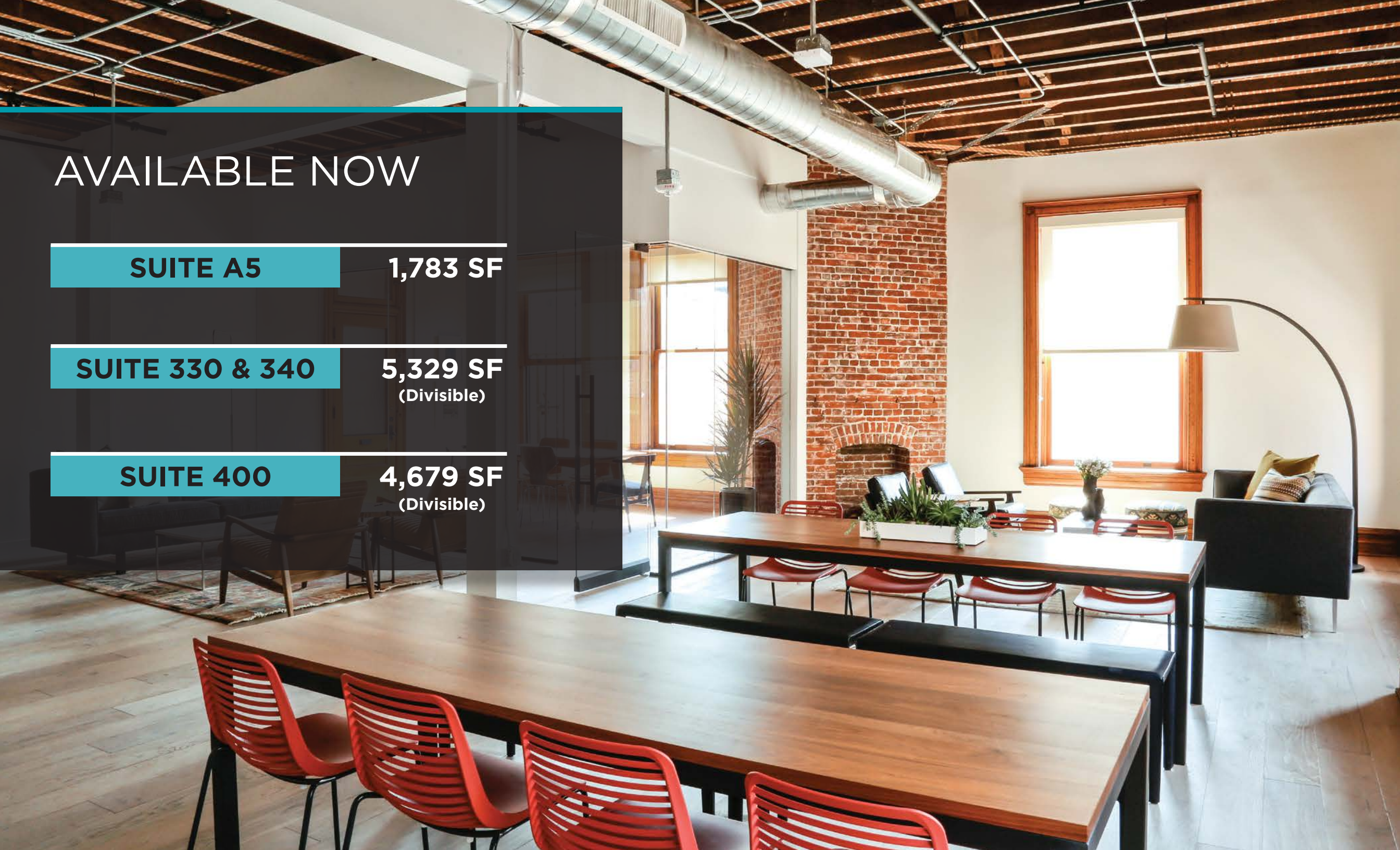
**1,783 SF**

**SUITE 330 & 340**

**5,329 SF**  
(Divisible)

**SUITE 400**

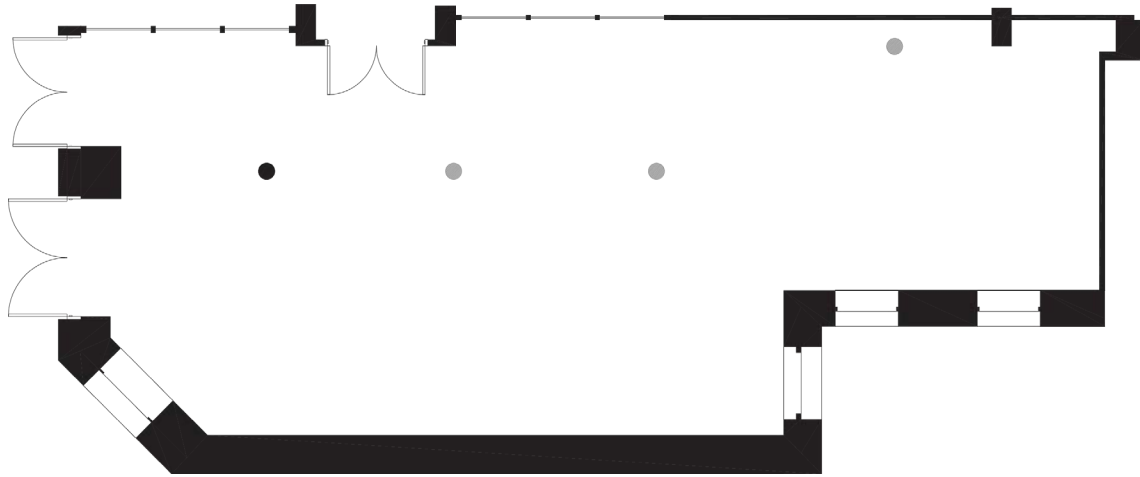
**4,679 SF**  
(Divisible)



# AMENITIES MAP

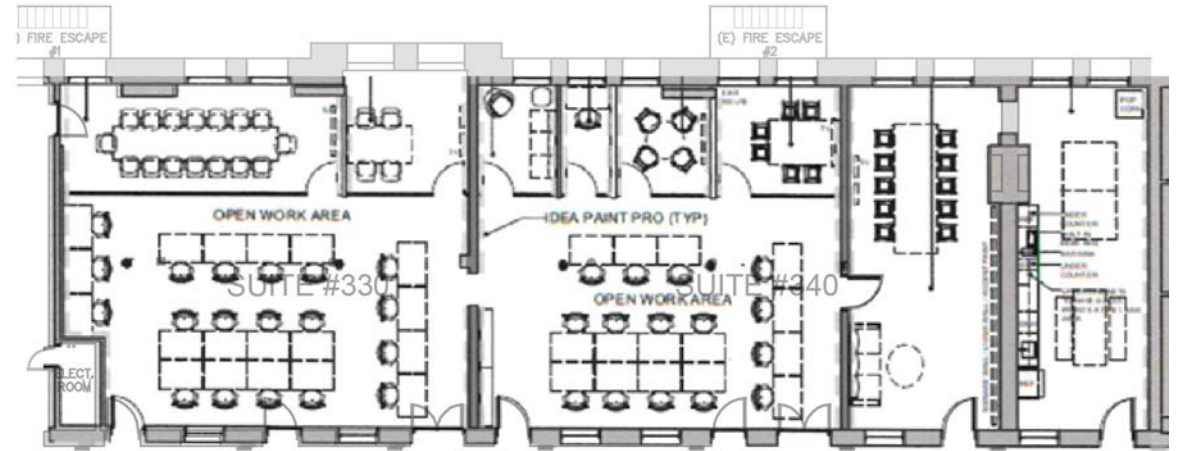


# AS-BUILT FLOOR PLANS



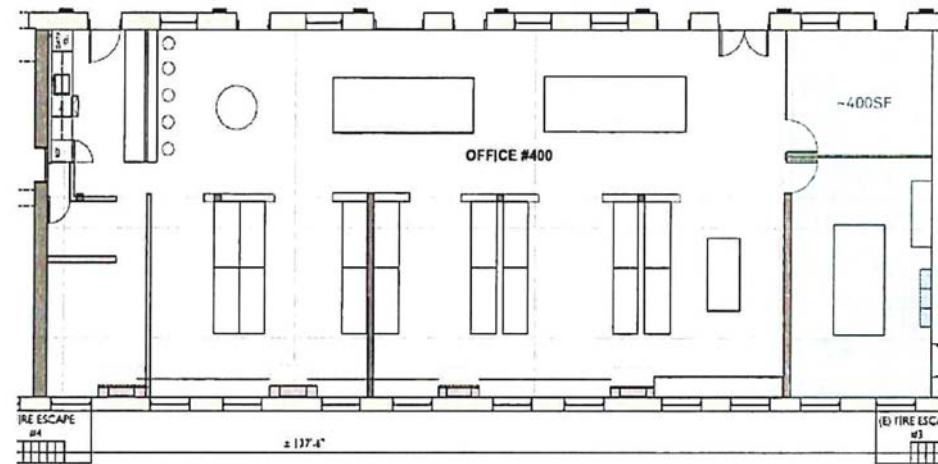
## SUITE A5

1,783 SF



## SUITE 330 & 340

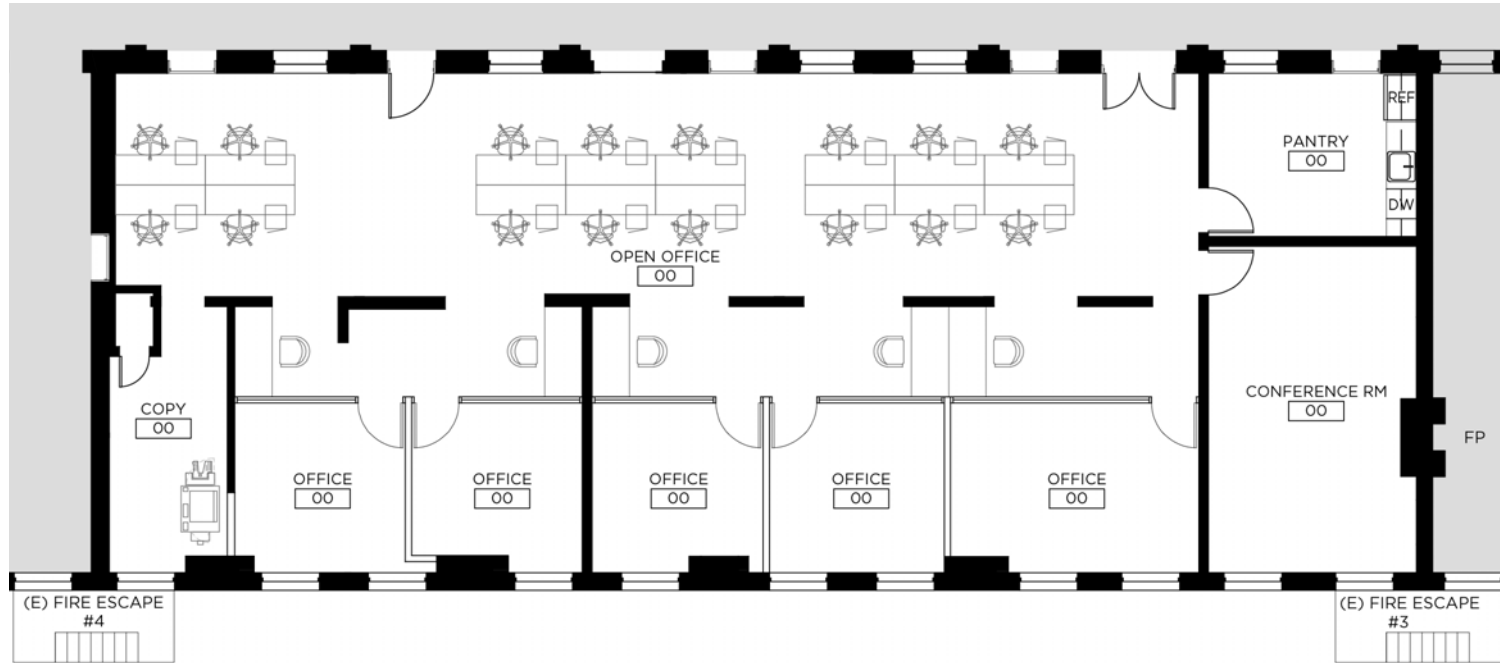
(DIVISIBLE TO 1,991 SF & 3,338 SF)



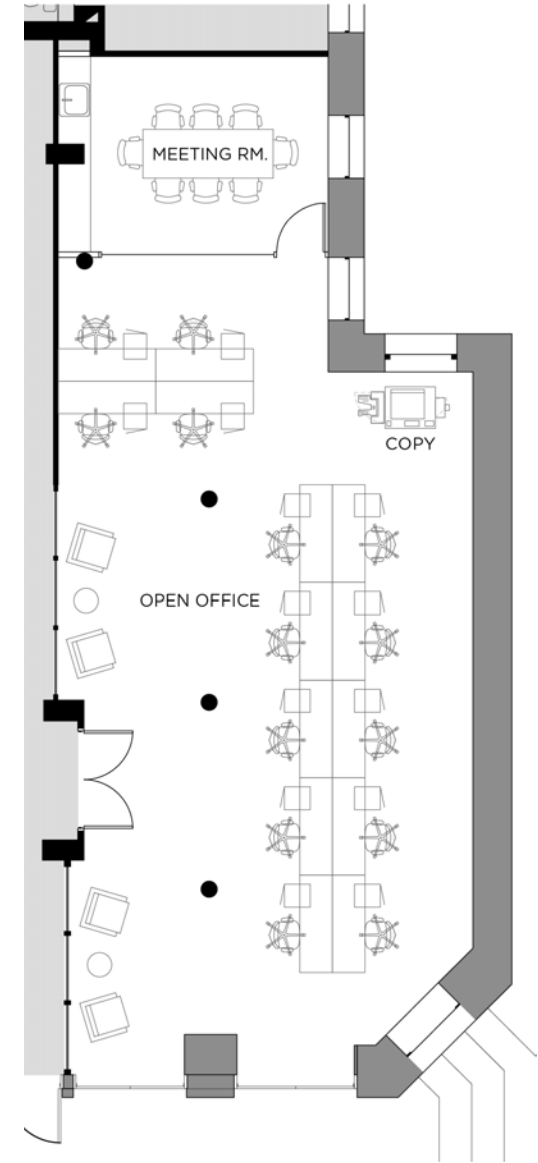
## SUITE 400

4,679 SF

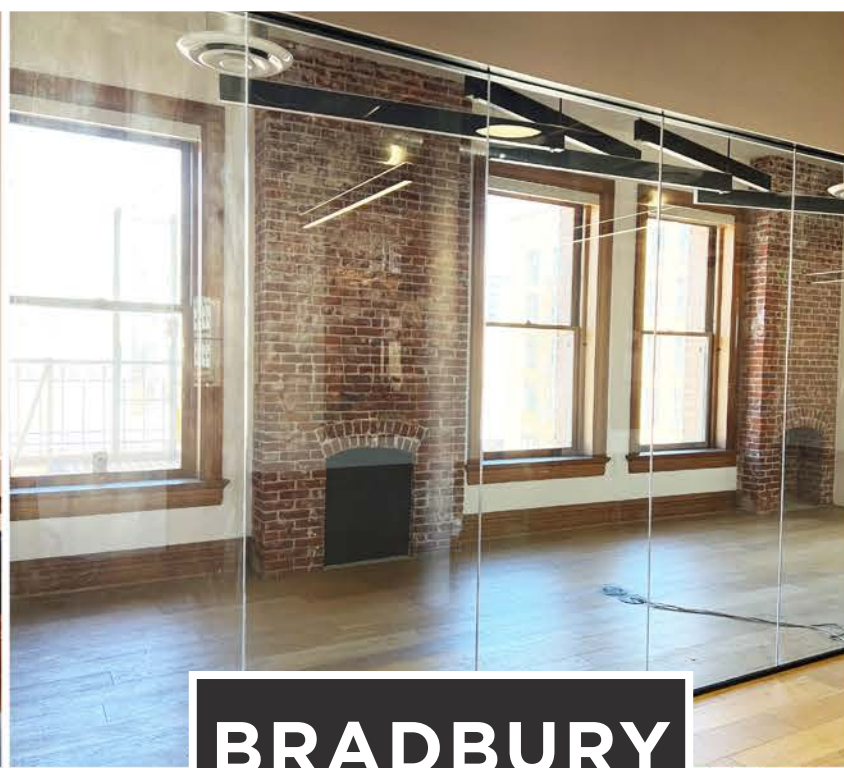
# HYPOTHETICAL FLOOR PLANS



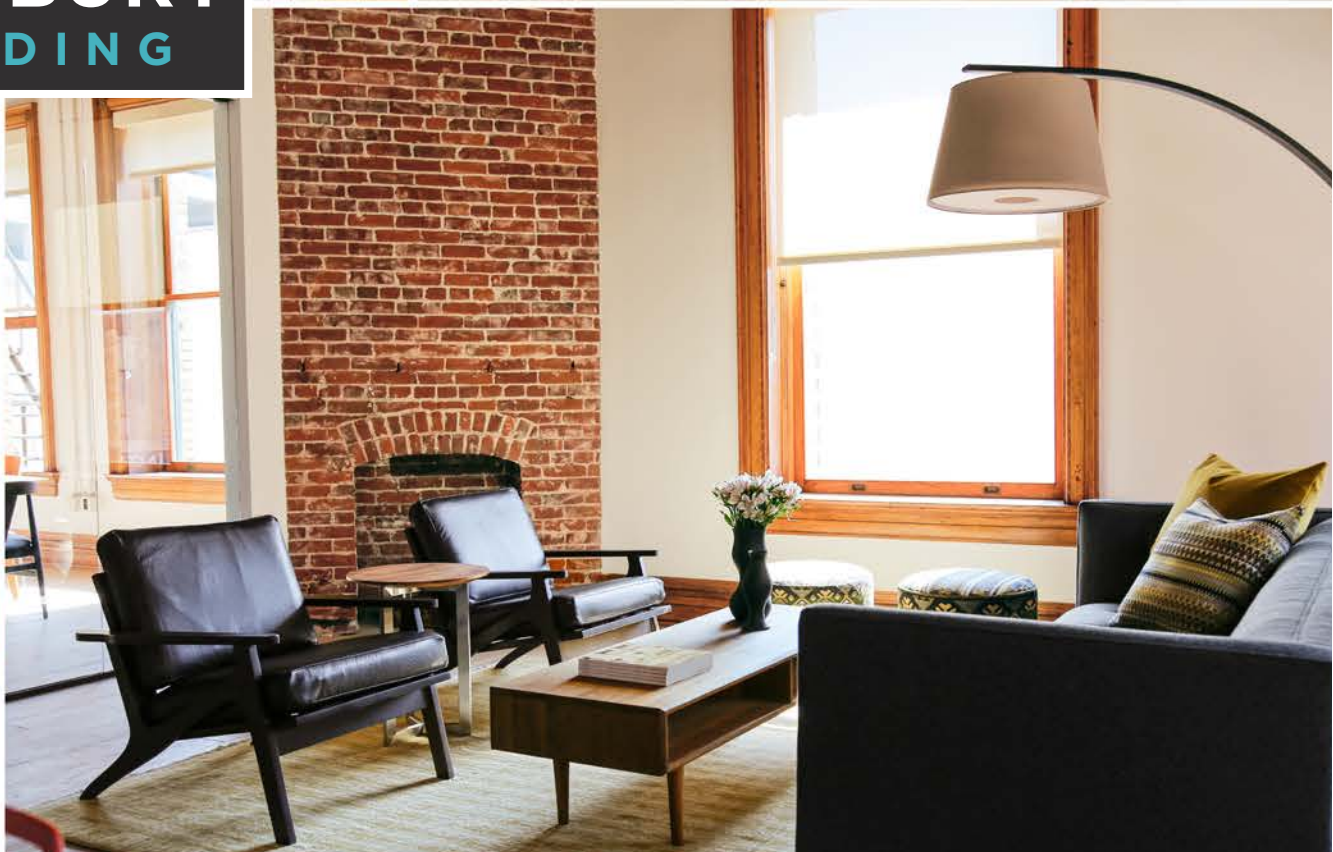
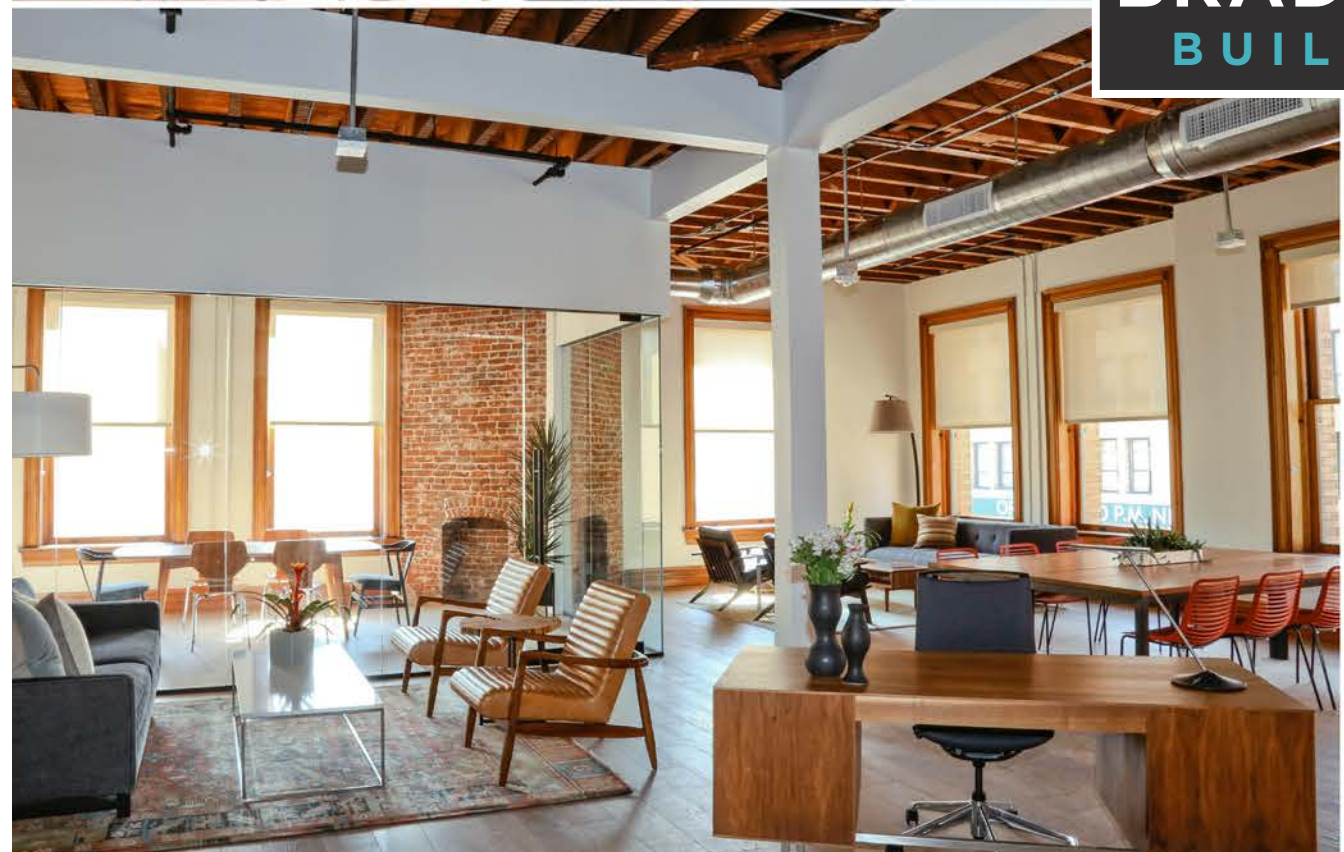
SUITE 400



SUITE A5



**BRADBURY**  
BUILDING



**213 S SPRING ST.**  
\$210/month

**220 S SPRING ST.**  
\$165/month

**237 S LOS ANGELES ST.**  
\$90/month

**245 S BROADWAY**  
\$200/month

**330 S MAIN ST.**  
\$120/month

**243 S SPRING ST.**  
\$165/month

**334 S MAIN ST.**  
\$160/month

**308 S HILL ST.**  
\$170/month

**333 S SPRING ST.**  
\$220/month

**BRADBURY**  
BUILDING

**433 S MAIN ST.**  
\$180/month

# PARKING MAP





# BRADBURY BUILDING 300-310 S BROADWAY

## BRITTANY WINN

Senior Director

+1 213 629 6514

[brittany.winn@cushwake.com](mailto:brittany.winn@cushwake.com)

LIC. #01978909

## MCKENNA GASKILL

Associate

+1 213 629 6529

[mckenna.gaskill@cushwake.com](mailto:mckenna.gaskill@cushwake.com)

LIC. #02049956

## MIKE J. CONDON

Vice Chairman

LIC. #02049956

900 WILSHIRE BOULEVARD, SUITE 2400

LOS ANGELES, CA 90017

+1 213 955 5100

[cushmanwakefield.com](http://cushmanwakefield.com)



©2023 Cushman & Wakefield. All rights reserved. The information contained in this communication is strictly confidential. This information has been obtained from sources believed to be reliable but has not been verified. NO WARRANTY OR REPRESENTATION, EXPRESS OR IMPLIED, IS MADE AS TO THE CONDITION OF THE PROPERTY (OR PROPERTIES) REFERENCED HEREIN OR AS TO THE ACCURACY OR COMPLETENESS OF THE INFORMATION CONTAINED HEREIN, AND SAME IS SUBMITTED SUBJECT TO ERRORS, OMISSIONS, CHANGE OF PRICE, RENTAL OR OTHER CONDITIONS, WITHDRAWAL WITHOUT NOTICE, AND TO ANY SPECIAL LISTING CONDITIONS IMPOSED BY THE PROPERTY OWNER(S). ANY PROJECTIONS, OPINIONS OR ESTIMATES ARE SUBJECT TO UNCERTAINTY AND DO NOT SIGNIFY CURRENT OR FUTURE PROPERTY PERFORMANCE.