

RESTAURANT AND CREATIVE OFFICE FOR LEASE



1600 LINCOLN BOULEVARD, SANTA MONICA, CA 90404



PREMISES

RESTAURANT: ± 5,001 SF
 OFFICE: ± 5,605 SF

TOTAL
 ± 10,606 SF

RENT

\$6.00/SF, NNN

TERM

5 - 10 Years

OCCUPANCY

Immidiatae

PARKING

17 Spaces @ \$175/space

FEATURES

- New Redevelopment
- Walking Distance to Trainstop
- Bayside Location
- Premium Restaurant Location

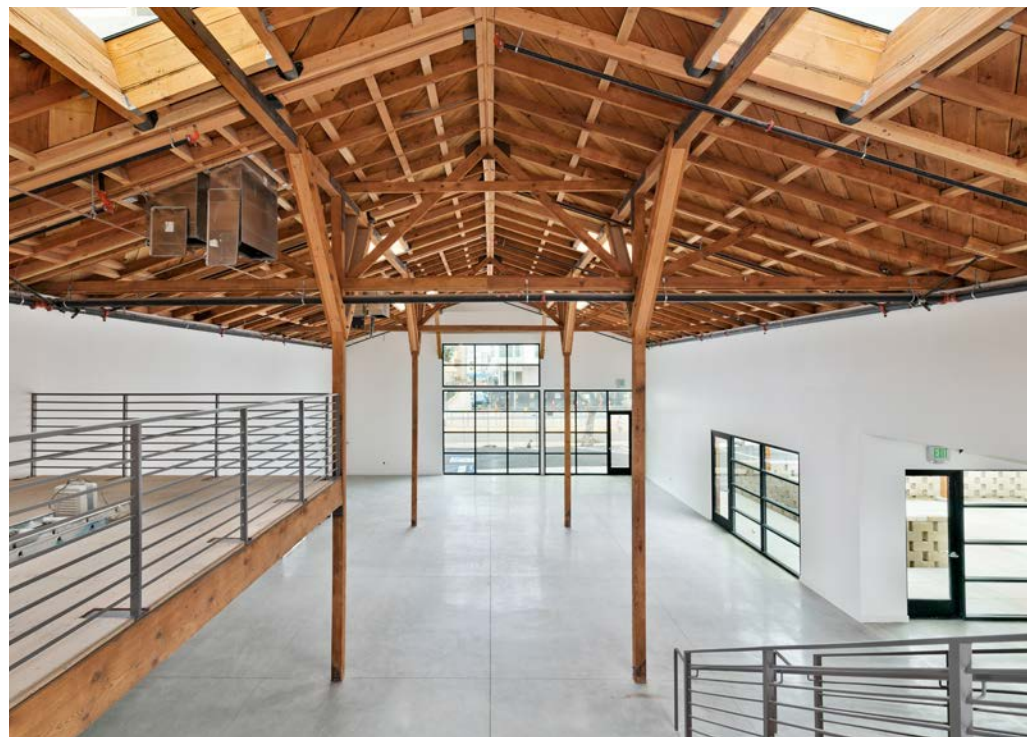
CONTACT

Aleks Trifunovic, SIOR
 310.899.2721
 atrifunovic@leewestla.com
 BKR DRE 01363109

Tibor Lody, SIOR
 310.899.2720
 tlody@leewestla.com
 AGT DRE 01261129

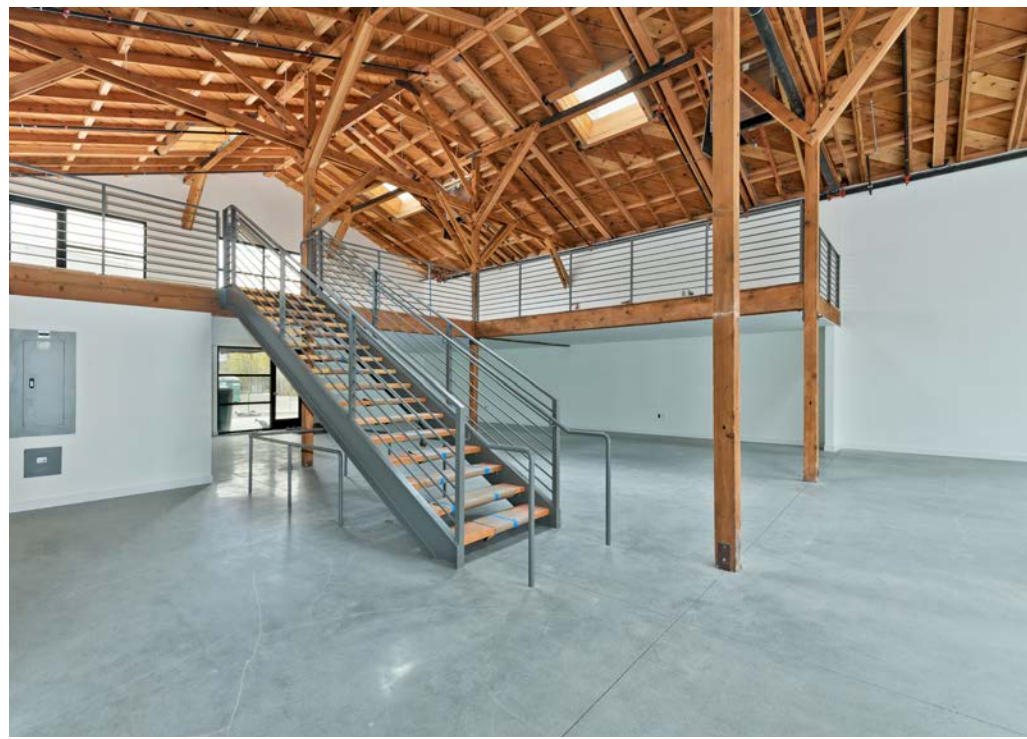
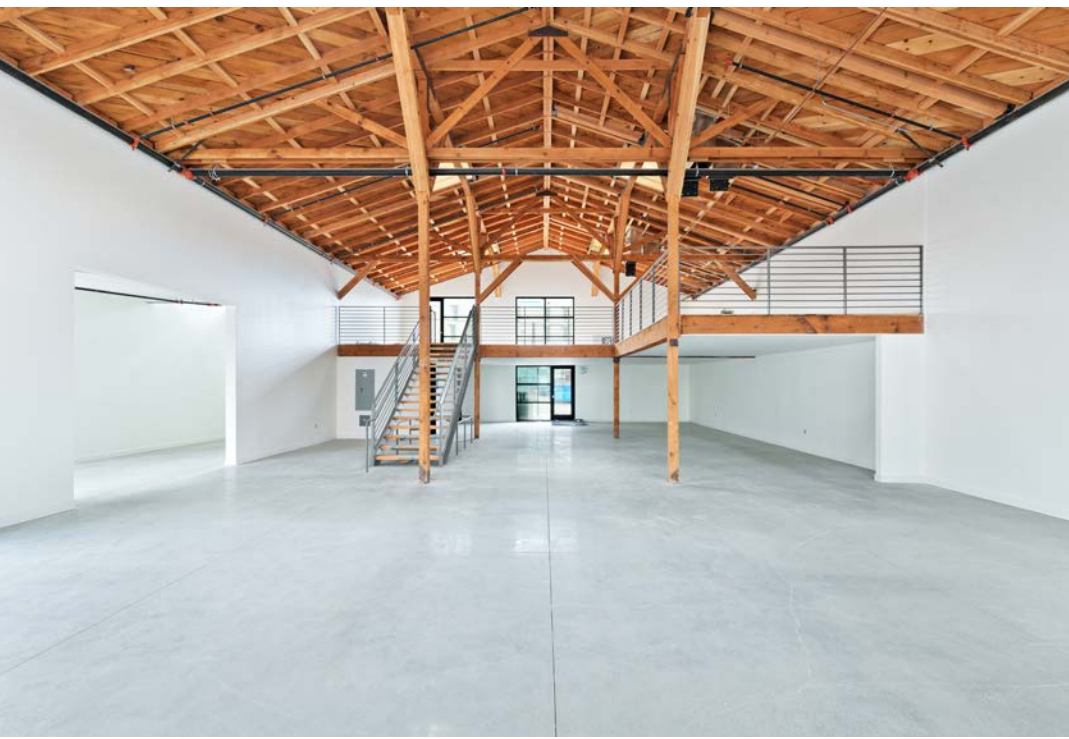
Keith Fielding
 310.899.2719
 kfielding@leewestla.com
 AGT DRE 01729915

Tommy Isola
 310.899.2709
 tisola@leewestla.com
 AGT DRE 01974024



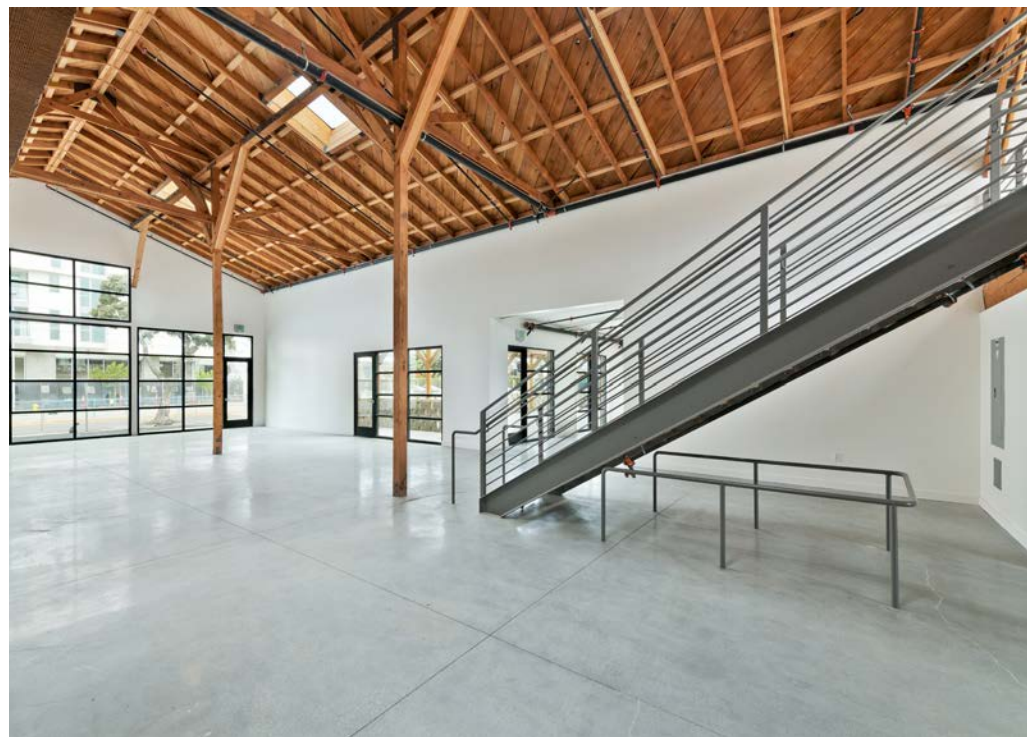
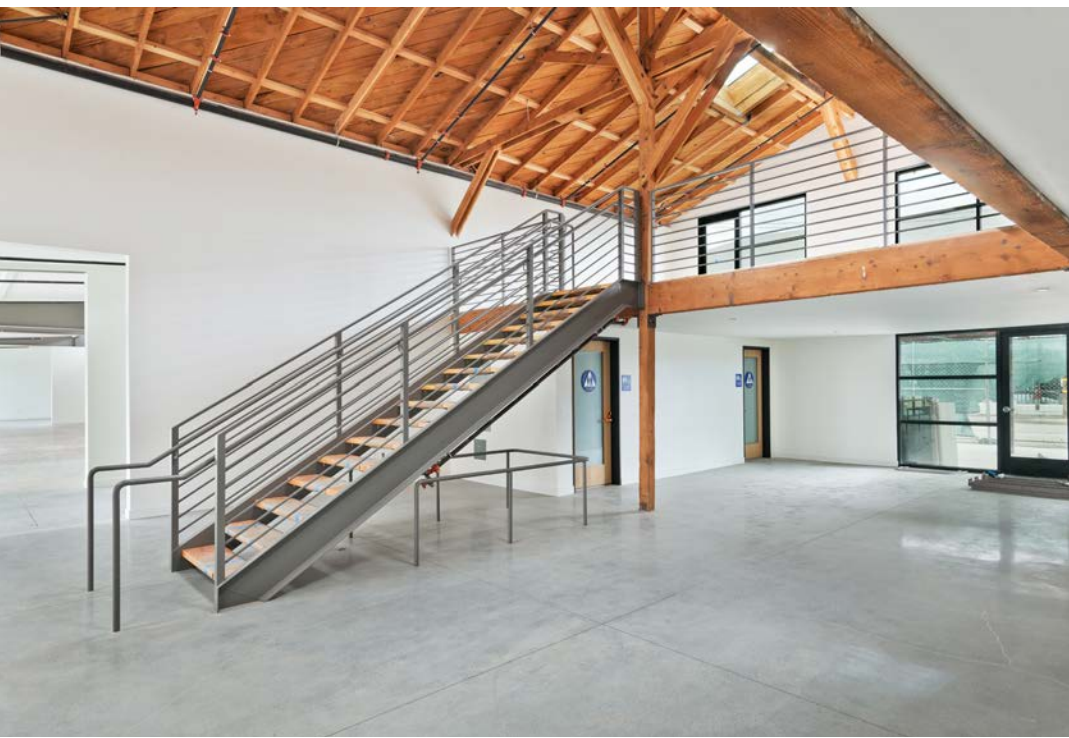
INTERIOR PHOTOS





INTERIOR PHOTOS





INTERIOR PHOTOS





EXTERIOR PHOTOS





EXTERIOR PHOTOS

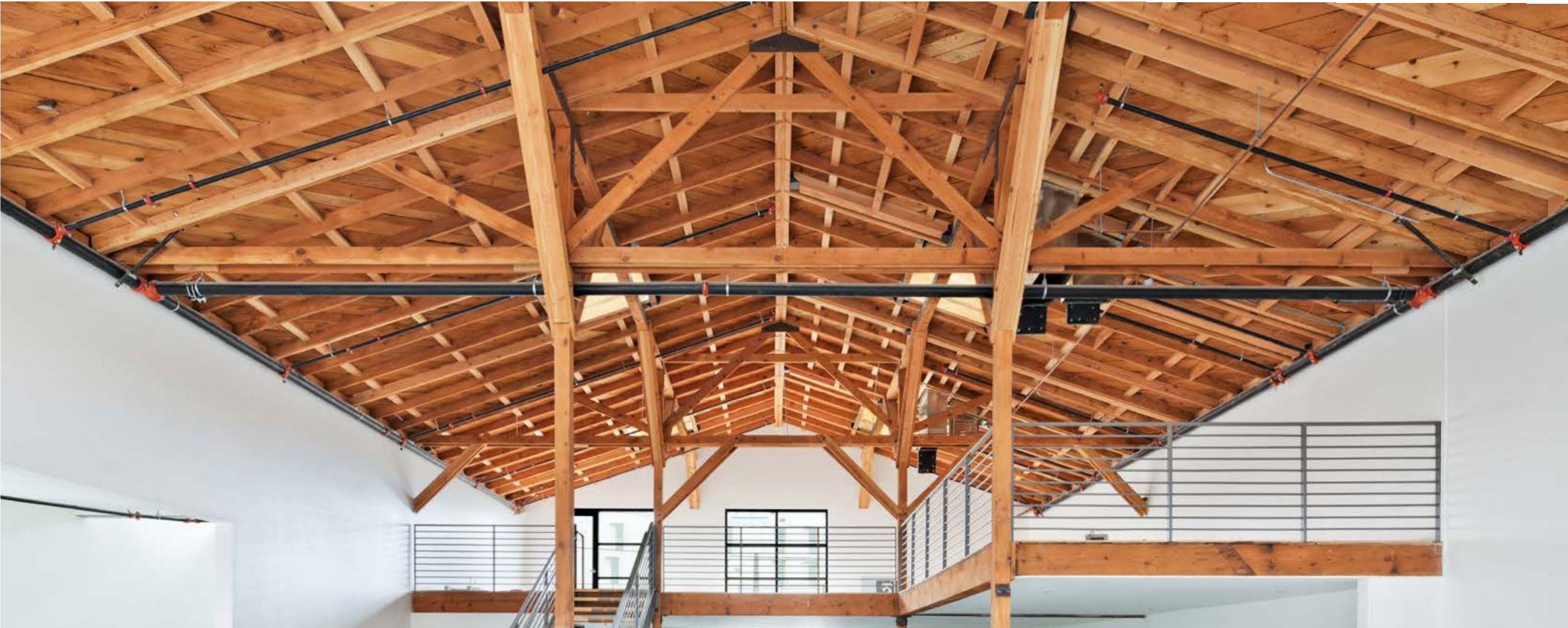


FLOOR PLAN





- | | | | |
|------------------|------------------------|-----------------------|--------------------------------------|
| 1. Philz Coffee | 6. BOA Steakhouse | 11. Santa Monica Pier | 16. Cassia |
| 2. Unami Burger | 7. Water Grill | 12. Mercado | 17. Benny's Tacos & Chick Rotisserie |
| 3. Sweetgreen | 8. Blue Daisy | 13. Hillstone | 18. Wexler's Deli |
| 4. P.F. Chang's | 9. Del Frisco | 14. Hotel Shangri-La | 19. Sweetfin |
| 5. Tender Greens | 10. Santa Monica Place | 15. Sidecar Doughnuts | 20. Bay Cities Italian Deli & Bakery |



Aleks Trifunovic, SIOR
President
310.899.2721
atrifunovic@leewestla.com
BKR DRE 01363109

Tibor Lody, SIOR
Principal
310.899.2720
tlody@leewestla.com
AGT DRE 01261129

Keith Fielding
Principal
310.899.2719
kfielding@leewestla.com
AGT DRE 01729915

Tommy Isola
Principal
310.899.2709
tisola@leewestla.com
AGT DRE 01974024

A DIVISION OF



Lee & Associates Los Angeles West, Inc.
1508 17th Street, Santa Monica, CA
310.899.2700 www.leewestla.com | DRE 01222000

